



SCIENTIFIC SERVICES CUSTOMER

SAMPLE BOTTLE GUIDE


Waste Water and Sludge Sampling Bottles

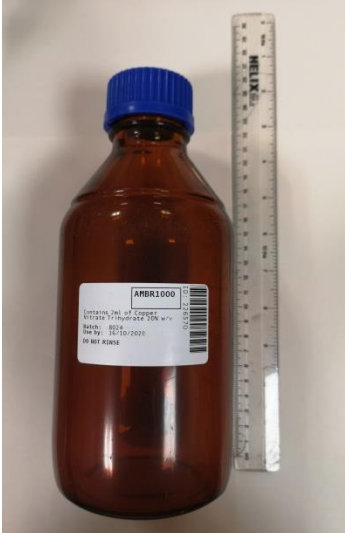
MCL2283 - SCIENTIFIC SERVICES CUSTOMER
BOTTLE GUIDES / BOTTLE REQUEST FORM - JROS-8QWJSV - VERSION: 49

Waste Water Sample Bottles.....	3
<u>ALS026</u>	3
<u>AMBR1000</u>	3
<u>ANION2</u>	4
<u>ASCORB 500</u>	4
<u>CU 500</u>	5
<u>CYANIDE</u>	5
<u>EPA (2-7)</u>	6
<u>GEN</u>	6
<u>GLASS05</u>	7
<u>GLASS10</u>	7
<u>METALS LR</u>	8
<u>METSOL LR</u>	8
<u>METFIL LR</u>	9
<u>MICRO NP</u>	9
<u>NONDET</u>	10
<u>ORGSUB-1 & ORGSUB-3</u>	10
<u>PEST500</u>	11
<u>PESTP & NONP</u>	11
<u>PHEN</u>	12
<u>SEM</u>	12
<u>STL 13</u>	13
<u>STL 17</u>	13
<u>STL 33</u>	14
<u>STL 71</u>	14
<u>STL 72</u>	15
<u>STL 102</u>	15
<u>STL 112</u>	16
<u>SUBCOVID19</u>	16
<u>SULPHIDE</u>	17
<u>TECHEM STD & WWCHEM STD</u>	17
<u>WW BOD 250</u>	18
<u>WWCHEM CRU</u>	18
<u>WW METALS DIS & WW METALS</u>	19
<u>WW METALS HCL</u>	19
<u>WPE</u>	20
<u>Sludge Sample Bottles.....</u>	20
<u>ALE 218</u>	20
<u>EPA 2 & 3</u>	21
<u>M SLUDGE</u>	21
<u>SLUDGE</u>	22
<u>SUB SLUDGE 2</u>	22
<u>SUB SLUDGE 3</u>	23
<u>STL 20</u>	23
<u>VFASLUDGE</u>	24

MCL2283 - SCIENTIFIC SERVICES CUSTOMER
BOTTLE GUIDES / BOTTLE REQUEST FORM - JROS-8QWJSV - VERSION: 49

Waste Water Sample Bottles

	<p>ALS026</p> <p>Description:</p> <p>60ml Glass Bottle – White Capped</p> <p>Treated: - Yes</p> <p>0.6ml of 0.0167M Potassium Bromate/Bromide solution and 0.6ml of 36.5-38% Hydrochloric Acid solution</p> <p>Associated Tests: -</p> <p>METHG, METHGSOL, METHG_LR,</p> <p>Directions for Use: -</p> <p>Remove lid only just before sampling Fill bottle slowly Do not rinse The bottles are date stamped and must be used by the expiry date shown</p> <p>Deliver to Lab Within: - 72 hours</p>
--	---

	<p>AMBR1000</p> <p>Description:</p> <p>1000ml Amber Glass Duran Bottle – Blue Capped</p> <p>Treated: - Yes</p> <p>Copper Nitrate</p> <p>Associated Tests: -</p> <p>PAH_CIP, PAH_GCMS, STEROID, PBDE and TRICLOSAN in wastewaters and trade effluents.</p> <p>Directions for Use: -</p> <p>Fill to 1 litre glass ridge only – Do not fill completely. Refrigerate sample once taken</p> <p>Deliver to Lab Within: - 72 hours</p>
---	--

MCL2283 - SCIENTIFIC SERVICES CUSTOMER
BOTTLE GUIDES / BOTTLE REQUEST FORM - JROS-8QWJSV - VERSION: 49



ANION2

Description: -

250ml Square Clear Plastic – Blue Capped

Treated: - No

Associated Tests: -

Fluoride & Sulphate

Directions for Use: -

Fill completely
Refrigerate sample once taken

Deliver to Lab Within: - 72 hours



ASCORB_500

Description: -

500ml Glass Duran Bottle – Red Capped

Treated: - Yes

Ascorbic Acid

Associated Tests: -


Di(2-ethylhexyl)phthalate

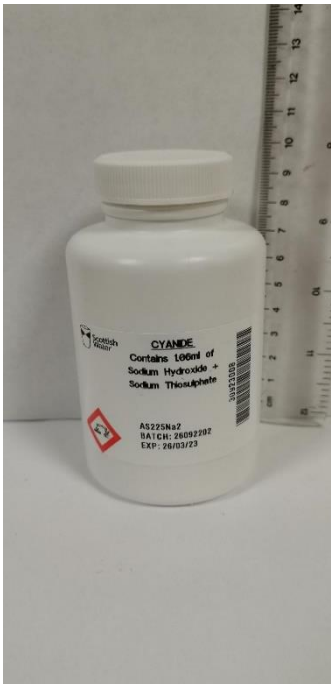
Directions for Use: -

Fill completely
Refrigerate sample once taken

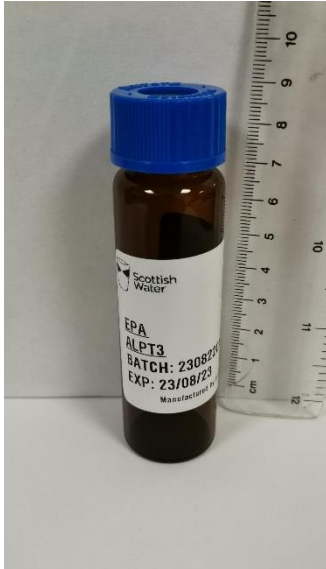
Deliver to Lab Within: - 72 hours

MCL2283 - SCIENTIFIC SERVICES CUSTOMER
BOTTLE GUIDES / BOTTLE REQUEST FORM - JROS-8QWJSV - VERSION: 49

	<p>CU_500</p> <p>Description: -</p> <p>500ml Glass Duran Bottle – Red Capped</p> <p>Treated: - Yes</p> <p>Copper Nitrate</p> <p>Associated Tests: -</p> <p>Phenols in wastewaters & trade effluent</p> <p>Directions for Use: -</p> <p>Fill completely Refrigerate sample once taken</p> <p>Deliver to Lab Within: - 72 hours</p>
---	---

	<p>CYANIDE</p> <p>Description: -</p> <p>250ml White Plastic Bottle- White Capped</p> <p>Treated: - Yes</p> <p>Sodium Hydroxide & Sodium Thiosulphate</p> <p>Associated Tests: -</p> <p>Total Cyanide, Anionic Detergents</p> <p>Directions for Use: -</p> <p>Fill completely, Do Not Rinse Bottles are date stamped and must be used by the expiry date Refrigerate sample once taken</p> <p>Deliver to Lab Within: - 72 hours</p>
---	--

MCL2283 - SCIENTIFIC SERVICES CUSTOMER
BOTTLE GUIDES / BOTTLE REQUEST FORM - JROS-8QWJSV - VERSION: 49



EPA (2-7)

Description: -

40ml Amber Glass Vial – Blue Capped

Treated: - Yes

Sodium Thiosulphate

Associated Tests: -

EPA2 – VOCS

EPA3 – Alcohols

EPA4 – Furfural

EPA7 – CHLOROMETH

Directions for Use: -

Fill to top without overflowing leaving no headspace, ensure no air bubbles remain after filling, Do Not Rinse

Bottles are date stamped and must be used by the expiry date

Refrigerate sample once taken

Deliver to Lab Within: - 72 hours



GEN

Description: -

1 Litre Square Plastic Bottle - White Capped

Treated: - No

Associated Tests: -

Subcontracted nutrients

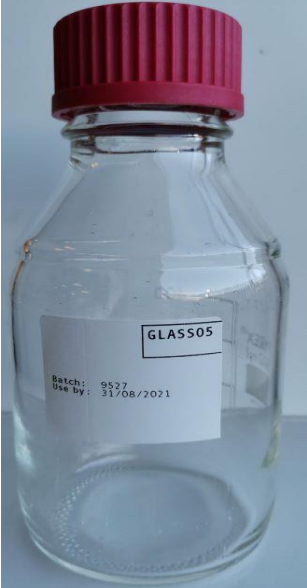
Directions for Use: -


Fill completely, Do Not Rinse

Refrigerate sample once taken

Deliver to Lab Within: - 24 hours


MCL2283 - SCIENTIFIC SERVICES CUSTOMER
BOTTLE GUIDES / BOTTLE REQUEST FORM - JROS-8QWJSV - VERSION: 49

	<p>GLASS05</p> <p>Description: -</p> <p>500 mL Glass Duran Bottle – Red Capped</p> <p>Treated: - No</p> <p>Associated Tests: -</p> <p>Total Petroleum Hydrocarbons (TPH_GCFID) & GCMS_SCAN (waste matrices only) Except Sludge</p> <p>Directions for Use: -</p> <p>Fill to ridge of bottle</p> <p>Refrigerate sample once taken</p> <p>Deliver to Lab Within: - 72 hours</p>
---	--

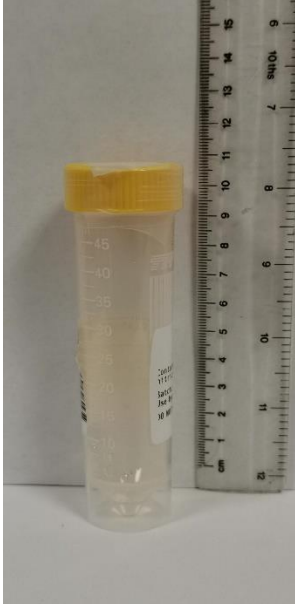
	<p>GLASS10</p> <p>Description: -</p> <p>1 litre Glass Duran Bottle – Blue Capped</p> <p>Treated: - No</p> <p>Associated Tests: -</p> <p>Organotin, APES.</p> <p>Directions for Use: -</p> <p>Do not fill above 1 litre line</p> <p>Refrigerate sample once taken</p> <p>Deliver to Lab Within: - 72 hours</p>
---	---

MCL2283 - SCIENTIFIC SERVICES CUSTOMER
BOTTLE GUIDES / BOTTLE REQUEST FORM - JROS-8QWJSV - VERSION: 49

	<p>METALS_LR</p> <p>Description: -</p> <p>250ml Square Clear Plastic – Blue Capped</p> <p>Treated: - No</p> <p>Associated Tests: -</p> <p>Total metals associated with METCIP test suite and Low Range Total Metals analysis.</p> <p>Directions for Use: -</p> <p>Fill completely,</p> <p>Deliver to Lab Within: - 48 hours</p>
--	---

	<p>METSOL_LR</p> <p>Description: -</p> <p>500ml Square Clear Plastic – Blue Capped</p> <p>Treated: - No</p> <p>Associated Tests: -</p> <p>Low Range Dissolved Metals (except Hg) for Final Effluent and Raw Water matrices.</p> <p>Directions for Use: -</p> <p>Fill completely (Samples to be filtered on arrival at lab)</p> <p>Deliver to Lab Within: - 48 hours</p>
---	---

MCL2283 - SCIENTIFIC SERVICES CUSTOMER
BOTTLE GUIDES / BOTTLE REQUEST FORM - JROS-8QWJSV - VERSION: 49



METFIL_LR

Description: -

50ml Plastic Centrifuge Tube – Yellow Capped

Treated: - No

Associated Tests: -

Dissolved Metals associated with test METCIP_SOL test suite.

Directions for Use: -

Sample should be filtered through 0.45um membrane onsite prior to filling.
Fill completely,

Deliver to Lab Within: - 48 hours



MICROT_NP

Description: -

500ml Clear Plastic Sterile (labelled) Bottle – Red Capped

Treated: - Yes

Sodium Thiosulphate

Associated Tests: -

Coliforms, E.coli, Faecal Strep, Clostridia perfringens, 22°C Plate Counts, 37°C Plate Counts & Pseudomonas aeruginosa, and Bacterial Flow Cytometry

Directions for Use: -

Fill to base of neck,
Do Not Rinse
Bottles are date stamped and must be used by the expiry date
Refrigerate sample once taken

Deliver to Lab Within: - 24 hours

MCL2283 - SCIENTIFIC SERVICES CUSTOMER
BOTTLE GUIDES / BOTTLE REQUEST FORM - JROS-8QWJSV - VERSION: 49



NONDET

Description: -

250ml Square Clear Plastic – – Blue Capped

Treated: - No

Associated Tests: -

Non-Ionic Detergents

Directions for Use: -

Fill completely
Refrigerate sample once taken

Deliver to Lab Within: - 72 hours



ORGSUB-1 & ORGSUB-3

Description: -

1litre Amber Glass Bottle – Opaque Cap

Treated: - No

Associated Tests: -


Acetaldehyde, Biphenyl, Phenylether, Cyclohexane & Dimethanol, and Eulans + Furons


Directions for Use: -

Fill completely

Deliver to Lab Within: - 48 hours

MCL2283 - SCIENTIFIC SERVICES CUSTOMER
BOTTLE GUIDES / BOTTLE REQUEST FORM - JROS-8QWJSV - VERSION: 49

	<p>PEST 500</p> <p>Description: -</p> <p>500ml Glass Duran Bottle – Red Capped</p> <p>Treated: -Yes</p> <p>Sodium Thiosulphate</p> <p>Associated Tests: -</p> <p>Waste Organochlorine Pesticides, Organophosphorus Pesticides, Pyrethroids and PCB's (W_PEST_PCB)</p> <p>Directions for Use: -</p> <p>Fill completely, Do Not Rinse Bottles are date stamped and must be used by the expiry date Refrigerate sample once take</p> <p>Deliver to Lab Within: - 72 hours</p>
---	--

	<p>PESTP & NONP</p> <p>Description: -</p> <p>1 Litre Glass - PTFE top White Capped (NLS bottle)</p> <p>Treated: - No</p> <p>Associated Tests: -</p> <p>OSM_ORG_P & OSM_NONP</p> <p>Directions for Use: -</p> <p>Fill completely</p> <p>Deliver to Lab Within: - 48 hours</p>
---	--

MCL2283 - SCIENTIFIC SERVICES CUSTOMER
BOTTLE GUIDES / BOTTLE REQUEST FORM - JROS-8QWJSV - VERSION: 49



PHEN

Description: -

250ml Round Glass with Stopper (NLS Bottle)

Treated: - Yes

Phen preservative

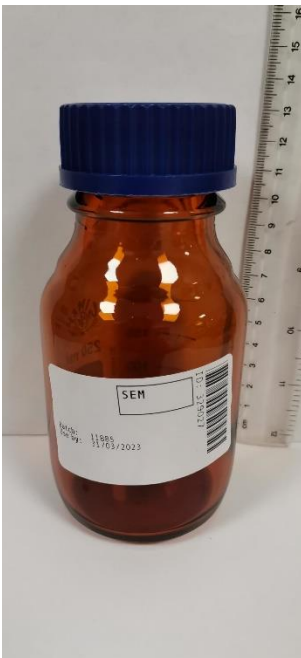
Associated Tests: -

OSM_PCP

Directions for Use: -

Fill to line
Refrigerate sample once taken

Deliver to Lab Within: - 72 hours



SEM

Description: -

250ml Amber Glass Bottle – Blue Capped

Treated: - No

Associated Tests: -

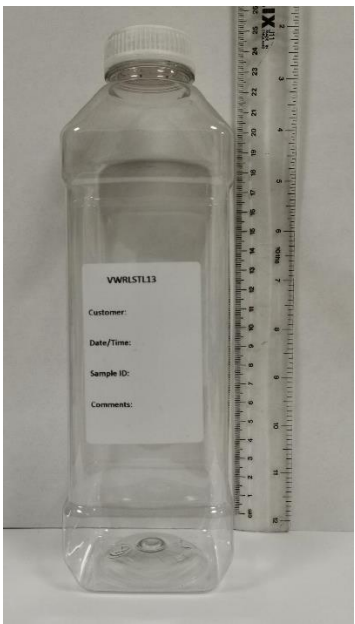
Total Fats, Oils & Greases, Solvent Extractable Material (hexane)


Directions for Use: -

Fill completely
Refrigerate sample once taken

Deliver to Lab Within: - 72 hours

MCL2283 - SCIENTIFIC SERVICES CUSTOMER
BOTTLE GUIDES / BOTTLE REQUEST FORM - JROS-8QWJSV - VERSION: 49

	<p>STL 13</p> <p>Bottles are listed in LIMS as STL13-1, STL13-2 denoting those separate bottles are required for different tests.</p> <p>Description: -</p> <p>1 Litre Square Plastic Bottle – White capped</p> <p>Treated: - No</p> <p>Associated Tests: -</p> <p>Total Nitrogen, CIP Tests for Total Phosphorus, Dissolved Phosphorus, BOD, COD, Soluble BOD, Soluble COD, pH, Suspended Solids, Ammonia, TON,</p> <p>Directions for Use: -</p> <p>Fill completely Refrigerate sample once taken</p> <p>Deliver to Lab Within: - 24 hours</p>
---	---

	<p>STL 17</p> <p>Description: -</p> <p>500ml Clear Glass Bottle – White Capped</p> <p>Treated: - No</p> <p>Associated Tests: -</p> <p>Organotin, OSM_ORG_CL & OSM_ORGCYR</p> <p>Directions for Use: -</p> <p>Fill completely Refrigerate sample once taken</p> <p>Deliver to Lab Within: - 48 hours</p>
---	---

MCL2283 - SCIENTIFIC SERVICES CUSTOMER
BOTTLE GUIDES / BOTTLE REQUEST FORM - JROS-8QWJSV - VERSION: 49



STL 33

Description: -

250 ml clear glass round Bottle – White lid with PTFE liner

Treated: - No

Associated Tests: -

GLYCOLS, OSM_ORG_CL & OSM_ORGPYR

Directions for Use: -

Fill completely
Refrigerate sample once taken

Deliver to Lab Within: - 48 hours



STL71

Description: -

60ml White Plastic Bottle – White Capped

Treated: - Yes

Sodium Hydroxide

Associated Tests: -

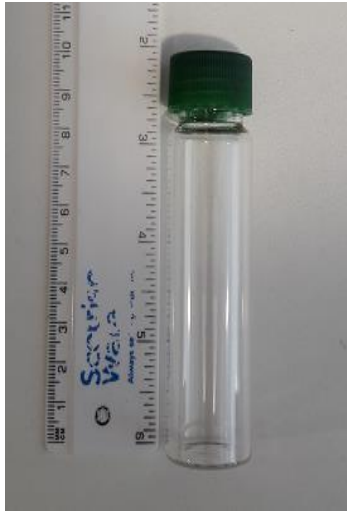
Subcontracted Total Cyanide and Free Cyanide


Directions for Use: -

Fill completely, Do Not Rinse
Bottles are date stamped and must be used by the expiry date
Refrigerate sample once taken

Deliver to Lab Within: - 72 hours


MCL2283 - SCIENTIFIC SERVICES CUSTOMER
BOTTLE GUIDES / BOTTLE REQUEST FORM - JROS-8QWJSV - VERSION: 49

 <p>The image shows a clear glass vial with a green cap. To its left is a ruler with markings in centimeters and millimeters. The vial is approximately 10 cm tall. There is some faint blue text on the ruler that reads 'Scientific Vials'.</p>	<p>STL72</p> <p>Description: -</p> <p>40ml clear glass vial with green lid.</p> <p>Treated: - No</p> <p>Associated Tests: -</p> <p>DISS_METH - Requires 2 full vials for each test.</p> <p>Directions for Use: -</p> <p>Do not rinse before filling Fill to top without over flowing Attach the cap securely without over tightening Refrigerate sample once taken</p> <p>Deliver to Lab Within: - 48 hours</p>
--	---

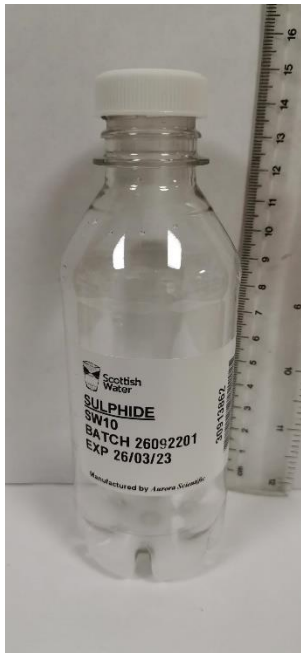
 <p>The image shows a clear plastic bottle with a white cap. The bottle is empty and stands on a white surface against a grey background.</p>	<p>STL102</p> <p>Description: -</p> <p>1Litre Plastic Bottle – White Capped</p> <p>Treated: - No</p> <p>Associated Tests: -</p> <p>Waste Inorganics analysis, General Inorganics, Metals (excluding Mercury analysis)</p> <p>Directions for Use: -</p> <p>One full container is required</p> <p>Deliver to Lab Within: - 72 hours</p>
--	---

MCL2283 - SCIENTIFIC SERVICES CUSTOMER
BOTTLE GUIDES / BOTTLE REQUEST FORM - JROS-8QWJSV - VERSION: 49

	<p>STL112</p> <p>Description: -</p> <p>500ml Round Green Glass Bottle – Black Capped</p> <p>Treated: - Yes</p> <p>25ml of Ultra-Resi analysed Methanol</p> <p>Associated Tests: -</p> <p>STL112-1 – CIP-HBCDD STL112-2 – CIP PBDE STL112-3 – CIP NONPOL</p> <p>Directions for Use: -</p> <p>Do Not Rinse, Fill Completely Two containers are required</p> <p>Deliver to Lab Within: - 72 hours</p>
---	---

	<p>SUBCOVID19</p> <p>Description: -</p> <p>250ml Opaque Polypropylene Bottle – White Capped</p> <p>Treated: - No</p> <p>Associated Tests: -</p> <p>SubCovid19</p> <p>Directions for Use: -</p> <p>Fill Completely</p> <p>Deliver to Lab Within: - 48 Hours</p>
---	--

MCL2283 - SCIENTIFIC SERVICES CUSTOMER
BOTTLE GUIDES / BOTTLE REQUEST FORM - JROS-8QWJSV - VERSION: 49



SULPHIDE

Description: -

250ml Square Clear Plastic – White Capped

Treated: - Yes

Sodium Carbonate & Zinc Acetate

Associated Tests: -

Sulphide & Soluble Sulphide

Directions for Use: -

Fill completely. Do not rinse

Deliver to Lab Within: - 48 hours



TECHEM_STD & WWCHEM_STD

Description: -

1 Litre Square Plastic Bottle – White Capped

Treated: - No

Associated Tests: -

Alkalinity, Ammonia, BOD (Total, Settled & Soluble), Cationic Detergents, Chloride, COD (Total, Settled & Soluble), Colourimetric Phenols, Conductivity, Dry Solids, Formaldehyde, Free Cyanide, Hexachrome, Kjeldahl Nitrogen, Nitrate, Nitrite, Non-Anionic Detergents, pH, Redox Potential, Settlement, Soluble Reactive Phosphate, Sulphite, Suspended Solids, Settled Suspended Solids, TOC, TON, Total Solids, Total Dissolved Solids, Total Nitrogen & Volatile Solids

Directions for Use: -

Fill completely, Do Not Rinse
Refrigerate sample once taken

Deliver to Lab Within: - 48 hours

MCL2283 - SCIENTIFIC SERVICES CUSTOMER
BOTTLE GUIDES / BOTTLE REQUEST FORM - JROS-8QWJSV - VERSION: 49



WW_BOD_250

Description: -

250ml Square Clear Plastic – Blue Capped

Treated: - No

Associated Tests: -

OSM BOD Final effluent back up.

Directions for Use: -

Fill completely. Refrigerate sample once taken

Deliver to Lab Within: - 48 hours



WWCHEM_CRU

Description: -

1 Litre Square Plastic Bottle – Red Capped

Treated: - No

Associated Tests: -

Alkalinity, Ammonia, Ammonia Low Volume, BOD (Total, Settled & Soluble), Cationic Detergents, Chloride, COD (Total, Settled & Soluble), Colourimetric Phenols, Conductivity, Dry Solids, Formaldehyde, Free Cyanide, Hexachrome, Kjeldahl Nitrogen, Nitrate, Nitrite, Non-Anionic Detergents, pH, Redox Potential, Settlement, Soluble Reactive Phosphate, Sulphite, Suspended Solids, Settled Suspended Solids, TOC, TON, Total Solids, Total Dissolved Solids, Total Nitrogen & Volatile Solids

Directions for Use: -

Fill completely, Do Not Rinse. Refrigerate sample once taken

Deliver to Lab Within: - 48 hours

MCL2283 - SCIENTIFIC SERVICES CUSTOMER
BOTTLE GUIDES / BOTTLE REQUEST FORM - JROS-8QWJSV - VERSION: 49



WW_METALS_DIS & WW_METALS

Description: -

250ml Square Clear Plastic – Blue Capped

Treated: - No

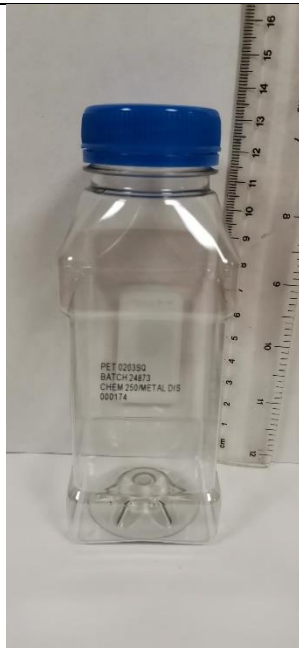
Associated Tests: -

All dissolved wastewater metals except Mercury

Directions for Use: -

Fill completely

Deliver to Lab Within: - 48 hours



WW_METALS (HCL)

Description: -

250ml Square Clear Plastic – Blue capped

Treated: - No

Associated Tests: -


Tin, Titanium

Directions for Use: -


Fill Half

Deliver to Lab Within: - 48 hours

MCL2283 - SCIENTIFIC SERVICES CUSTOMER
BOTTLE GUIDES / BOTTLE REQUEST FORM - JROS-8QWJSV - VERSION: 49

	<p>WPE</p> <p>Description: -</p> <p>250ml Square Clear Plastic PET Bottle – Black Capped</p> <p>Treated: - No</p> <p>Associated Tests: -</p> <p>SUB_AN_DET</p> <p>Directions for Use: -</p> <p>Fill completely Refrigerate sample once taken</p>
---	---

Sludge Sample Bottles

	<p>ALE 218</p> <p>Description: -</p> <p>500ml Round Opaque Plastic Tub – Red Capped</p> <p>Treated: - No</p> <p>Associated Tests: -</p> <p>Total Sulphur in Sludges (Subcontracted)</p> <p>Directions for Use: -</p> <p>Fill completely Refrigerate sample once taken</p> <p>Deliver to Lab Within: - 24 hours</p>
---	---

MCL2283 - SCIENTIFIC SERVICES CUSTOMER
BOTTLE GUIDES / BOTTLE REQUEST FORM - JROS-8QWJSV - VERSION: 49



EPA 2 & 3

Description: -

40ml Amber Glass Vial – Blue Capped

Treated: - Yes

Sodium Thiosulphate

Associated Tests: -

EPA2 = VOCs

EPA3 = Alcohols

Directions for Use: -

Fill to top without overflowing leaving no headspace, ensure no air bubbles remain after filling.

Do Not Rinse, Bottles are date stamped and must be used by the expiry date

Refrigerate sample once taken

Deliver to Lab Within: - 72 hours



M_SLUDGE

Description: -

500ml Square Opaque Plastic Tub – White Capped

Treated: - No

Associated Tests: -

Coliforms, E.coli & Salmonella


Directions for Use: -


Fill completely

Refrigerate sample once taken


Deliver to Lab Within: - 24 hours


MCL2283 - SCIENTIFIC SERVICES CUSTOMER
BOTTLE GUIDES / BOTTLE REQUEST FORM - JROS-8QWJSV - VERSION: 49

	<p>SLUDGE</p> <p>Description: -</p> <p>500ml Square Opaque Plastic Tub – White Capped</p> <p>Treated: - No</p> <p>Associated Tests: -</p> <p>All Inorganic sludge tests and metals (Separate ALE218 & STL20 bottles required for Sulphur and Fluoride analysis)</p> <p>Directions for Use: -</p> <p>Fill completely Refrigerate sample once taken</p> <p>Deliver to Lab Within: - 48 hours</p>
---	--

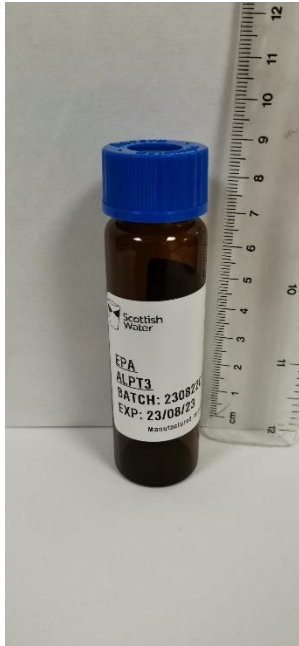
	<p>SUB_SLUDGE_2</p> <p>Description: -</p> <p>500ml Square Opaque Plastic Tub – White Capped</p> <p>Treated: - No</p> <p>Associated Tests: -</p> <p>Subcontracted tests - NITRATESUB, NITRITESUB, PHOS_SRSUB, SUB_METB, SUB_METSN, SUB_METV, SUB_PFAS_TOTAL-S, SUB_SULPHATE, SUB_TOC, SUB_TOTN-S, SUB_TOTPETROLEUM, SUB_CARBTOT, THALLIUM (Separate ALE218 & STL20 bottles required for Sulphur and Fluoride analysis)</p> <p>Directions for Use: -</p> <p>Fill completely Refrigerate sample once taken</p> <p>Deliver to Lab Within: - 48 hours</p>
---	--

MCL2283 - SCIENTIFIC SERVICES CUSTOMER
BOTTLE GUIDES / BOTTLE REQUEST FORM - JROS-8QWJSV - VERSION: 49

	<p>SUB_SLUDGE_3</p> <p>Description: -</p> <p>500ml Square Opaque Plastic Tub – White Capped</p> <p>Treated: - No</p> <p>Associated Tests: -</p> <p>Subcontracted tests - SUB_CALORIFIC_VALUE, SUB_KJN (Separate ALE218 & STL20 bottles required for Sulphur and Fluoride analysis)</p> <p>Directions for Use: -</p> <p>Fill completely Refrigerate sample once taken</p> <p>Deliver to Lab Within: - 48 hours</p>
---	---

	<p>STL20</p> <p>Description: -</p> <p>500ml Square Opaque Plastic Tub – Red Capped</p> <p>Treated: - No</p> <p>Associated Tests: -</p> <p>Fluoride Analysis (subcontracted)</p> <p>Directions for Use: -</p> <p>Fill completely Refrigerate sample once taken</p> <p>Deliver to Lab Within: - 48 hours</p>
---	--

MCL2283 - SCIENTIFIC SERVICES CUSTOMER
BOTTLE GUIDES / BOTTLE REQUEST FORM - JROS-8QWJSV - VERSION: 49



VFASLUDGE

Description: -

40ml Amber or clear Glass Vial – Blue Caped

Treated: - No

Associated Tests: -

Volatile Fatty Acids

Directions for Use: -

Fill completely, Do Not Rinse
Bottles are date stamped and must be used by the expiry date
Refrigerate sample once taken

Deliver to Lab Within: - 24 hours

-----END OF WASTEWATER BOTTLE LIST-----